



PARAMI
UNIVERSITY



Academic Year
2025-26

Undergraduate Programs

Information Handbook

1250 CONNECTICUT AVENUE, NW, SUITE 700 WASHINGTON, DC 20036

202-387-2311

www.parami.edu.mm

info@parami.edu.mm



TABLE OF CONTENTS

- 01 About the University
- 02 Licensure and Accreditation
- 03 Associate in Arts (AA) Program
- 04 Bachelor of Arts (BA) Program
- 05 PPE-major and SDS-major Courses
- 06 Career Prospects
- 07 Student Exchange Opportunities
- 08 Learning Hub
- 09 Admissions and Financial Aid

1. ABOUT THE UNIVERSITY

Parami University is an online liberal arts and sciences university that offers Associate and Bachelor's degrees. The classes are fully synchronous and delivered using advanced education technologies with world-class faculty. Its undergraduate degree programs are licensed under the Higher Education Licensure Commission of Washington, DC, in the US.

Since its humble beginnings in 2017 as a liberal arts education institution in Burma (Myanmar), Parami University has committed itself to empowering youth to cultivate leadership in the service of humanity, civic engagement to communities, and relationship to the natural world. It aims to provide quality education with a focus on academic excellence and holistic development, and promote access to higher education for youth with limited higher education pathways globally.

VISION

Parami University aims to be an institution of choice for students in Southeast Asia seeking top quality higher education opportunities via advanced delivery technologies.

MISSION

Parami University is committed to educating underserved students in developing countries so that they will become effective change agents and contributing members of the global community. Parami accomplishes this by nurturing critical thinking, inspired leadership, and compassionate service through globally competitive liberal arts and sciences education.

GOAL AND OBJECTIVES

With these vision and mission, the University sets the goal to develop top quality educational programs and opportunities for underserved students via advanced delivery modalities to become globally-minded and responsible citizens of the global society. This will be accomplished through the following objectives.

- 1 To expand university-level education opportunities for underserved students in Southeast Asia to obtain formal college credits and degrees;
- 2 To help students acquire the general skills and competencies necessary to succeed in advanced undergraduate or graduate courses through the liberal arts and sciences;
- 3 To prepare students for successful careers and purposeful citizenship in a rapidly changing world.



TAIWAN TRIP 2024:
Taiwan Cultural Immersion Program

PROGRAMS AT PARAMI

Parami University currently offers Associate in Arts (AA) and Bachelor of Arts (BA) degree programs, with two majors in the Bachelor of Arts degree program: Bachelor of Arts in Philosophy, Politics, and Economics (PPE) and Bachelor of Arts in Statistics and Data Science (SDS).

Students admitted to Parami University will have the choice of completing either the AA program or the BA program. In the BA program, they can choose their major in either Philosophy, Politics, and Economics (PPE), or Statistics and Data Science (SDS). The successful completion of the minimum requirements of either degree program, as outlined below, confers them with the respective degree.

DEGREE PROGRAMS

Full-time Synchronous Online Learning



**Philosophy, Politics, and
Economics (PPE)**



**Statistics and Data Science
(SDS)**

2. LICENSURE AND ACCREDITATION

Parami University is licensed by the District of Columbia Higher Education Licensure Commission. As a new institution recently founded, the university has yet to be accredited. The University will seek accreditation by an institutional accreditor recognized by the United States Department of Education in due course.

WHY LIBERAL EDUCATION?

Parami University believes that liberal education prepares an individual to best hone 21st century skills, such as critical thinking, creativity, effective communication, and complex problem solving. The report *The Future of Jobs* published by the *World Economic Forum* estimated that more than two thirds of the jobs that exist now will disappear in a decade or so. In such a dynamic work environment with changes developing every year, or even every month, a particular skill set in one specific area of technical, professional or vocational expertise could become outdated rapidly. In this technological age where the information is easily available at one's fingertips, the importance of analyzing information, extracting value from it, and applying it to where it is necessary has never been greater. As Alvin Toffler said, 'The illiterate of the 21st century will not be those who cannot read and write, but those who cannot learn, unlearn and relearn', we believe that learning, unlearning and relearning—skills that liberal education is most apt to provide—will be very important in the development of our students. The liberal arts and sciences education philosophy is the cornerstone of all of our undergraduate degree programs.

ONLINE LEARNING AT PARAMI UNIVERSITY



Google Workplace for Education
(parami.edu.mm account)



Canvas Learning Management System



Online textbook access



Synchronous learning
through Zoom & Padlet



Access to prestigious electronic databases



Support for students with disabilities




We strive to incorporate accessibility features into our applications and websites for students with hearing or visual impairments.

3. ASSOCIATE IN ARTS (AA) PROGRAM

An Associate degree is an academic degree taken at the undergraduate level. A two-year associate degree offers students with general education courses and electives that can count toward the four-year degree. Students with an associate degree can enter into the third year of the University's Bachelor degree program. In some fields, Associate degrees can qualify students for entry-level careers.

Objectives of an Associate Degree Program

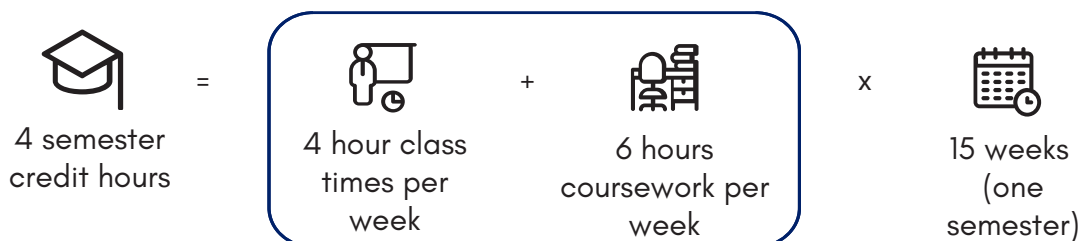
The objectives of an associate degree program are:

-  To expand university education pathways through the first two years of university
-  To nurture students to be holistically prepared in general skills and competencies in order to contribute to their communities and to succeed in advanced undergraduate courses
-  To connect students with opportunities to continue their third- and fourth-year undergraduate studies within and beyond Parami

General Program Structure

All students entering into an AA program must take the workshops/programs and the courses as laid out below, totaling at least sixty four (64) credit hours. Students are encouraged to take more than 64 credits; however, they must balance their coursework to ensure that they receive good grades in the courses that they take. It is better to take fewer courses and get good grades than to take more courses and get low grades. Students should talk to their Academic Program Advisors to understand course load.

1 course at Parami = 4 semester credit hours



1 semester = 4-5 courses



CURRICULUM AND COMMITMENT

4. BACHELOR OF ARTS (BA) PROGRAM

US INTERNSHIP 2024
Rising Generation Summer Internship Program



Students who are pursuing a BA will declare their major in either Philosophy, Politics, and Economics (PPE) or Statistics and Data Sciences (SDS). All students entering the third year must have declared a major. At the end of the program, they will need to have completed 128 credits to be eligible to graduate with a BA. A minimum of 64 credit hours out of 128 credit hours must be completed at Parami University. Credit transfers from other accredited institutions, particularly from the Open Society University Network will be accepted at the discretion of the Dean of Academic Affairs.

Regular academic program advising is offered to individual students year-round to ensure that students remain on track for the graduation pathway, and are able to navigate degree program requirements. All first-year students have to undergo cohort-group advising sessions at the beginning of each academic year to have a clear understanding of program requirements. Monthly small group advising sessions, as well as one-to-one advising sessions on appointment, are also offered.

Students also have access to tutors to support them with academic writing and select academic subjects. Students are also encouraged to make use of academic-related workshops such as academic integrity, data visualization, and research fundamentals that are offered from time to time throughout the year by the Academic Tutors. Students may feel comfortable sharing their academic or even their personal struggles; however, the Academic Tutors will turn to those officers from the Unit of Student Support Services, if they believe that students may benefit from discussing personal issues with the Office of Student Affairs.

Objectives of Major Programs

<p>PPE</p>	<ul style="list-style-type: none"> • To cultivate critical thinking enabled by an interdisciplinary approach to social scientific inquiry. • To underscore the importance of the intellectual connections between Philosophy, Politics, and Economics. • To engage in comparative political theory analyzed through multiple philosophical traditions and global perspectives.
<p>SDS</p>	<ul style="list-style-type: none"> • To cultivate critical thinking enabled by knowledge and understanding of statistics and data science. • To appreciate the centrality of statistics and data science in identifying and investigating complex questions in different fields. • To become ethical and responsible data professionals.

UNDERGRADUATE JOURNEY



5. PPE-MAJOR AND SDS-MAJOR COURSES

Philosophy, Politics, and Economics (PPE) Major

Seven Required Foundational 100-249 level PPE Courses. These courses may be taken to satisfy both the requirements for the PPE major and for general education. Three 250-349 level Core Courses in a Chosen Track (ALL students in a major must take these based on their chosen track) as in the table.

Philosophy	<ol style="list-style-type: none">1. Comparative Philosophy(West/non-West)2. Philosophy and Gender3. Philosophy as Practice
Politics	<ol style="list-style-type: none">1. International Relations2. Power and Resistance3. Democracy, Authoritarianism & Regime Transitions
Economics	<ol style="list-style-type: none">1. Economics of Globalization2. Development Economics3. Behavioral Economics

Three 350-499 level Electives (Students can choose per their interests; however, at least two of them must be at or above 400) and two Senior Capstone Courses.

Statistics and Data Science (SDS) Major

Seven Required Foundational 100-249 level SDS Courses (ALL students in SDS must take these). Three 250-349 level Core Courses in a Chosen Track (ALL students in a major must take these based on their chosen track) as in the below table.

Statistics	<ol style="list-style-type: none">1. Statistical Programming with R2. Time Series Analysis3. Mathematical Statistics
Data Science	<ol style="list-style-type: none">1. Data Structures and Algorithms2. Data Management3. Intro to Machine Learning

Three 350-499 level Electives (Students can choose per their interests; however, at least two of them must be at or above 400) and two Senior Capstone Courses.

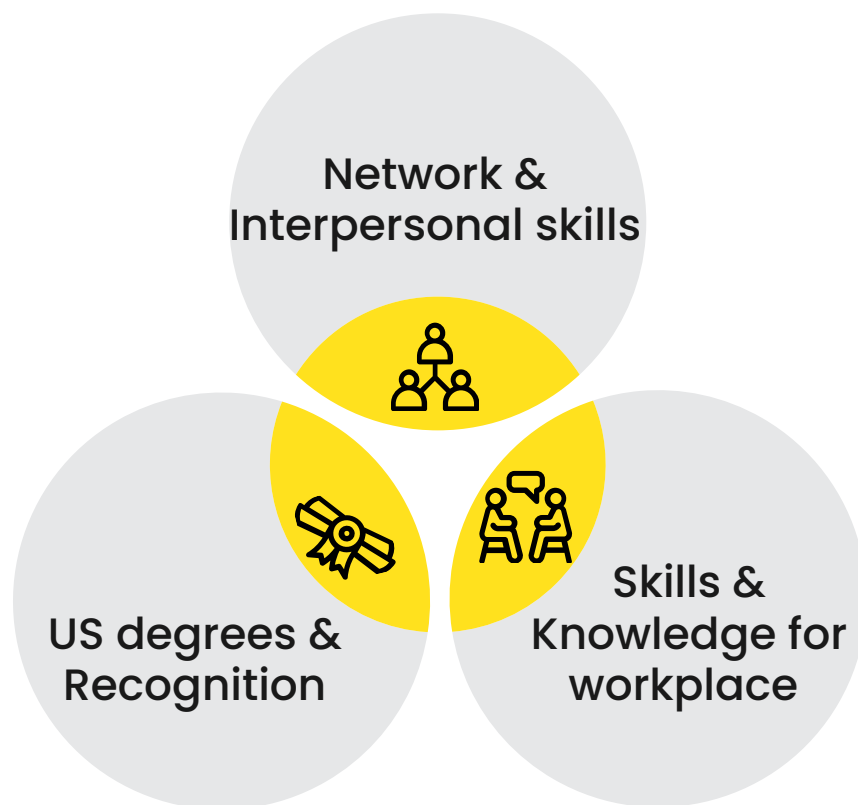
6. CAREER PROSPECTS

Philosophy, Politics, and Economics (PPE)

The PPE major is suited for students interested in social sciences and humanities, preparing them for careers in **international affairs, public policy, business, law, journalism, consulting, international development, and market research.**

Statistics and Data Science (SDS)

The SDS major targets students eager to analyze data using statistical tools, leading to opportunities in **data analytics, risk assessment, finance, technology, and market research.**



For more information: go to parami.edu.mm/undergraduate-studies

7. STUDENT EXCHANGE OPPORTUNITIES



GET ENGAGED 2024
BERLIN, GERMANY

Student Actions and Youth Leadership Conference



US INTERNSHIP 2024

Rising Generation Summer Internship Program



TAIWAN TRIP 2024

Taiwan Cultural Immersion Program

Exchange opportunities and programs are offered occasionally and are structured to be highly competitive. Selected participants undergo a rigorous application process, ensuring that only the most qualified individuals engage in these enriching, cross-cultural experiences.

8. LEARNING HUB



Located in Myanmar and Thailand.



For the students who need stable electricity and internet connection to attend classes.



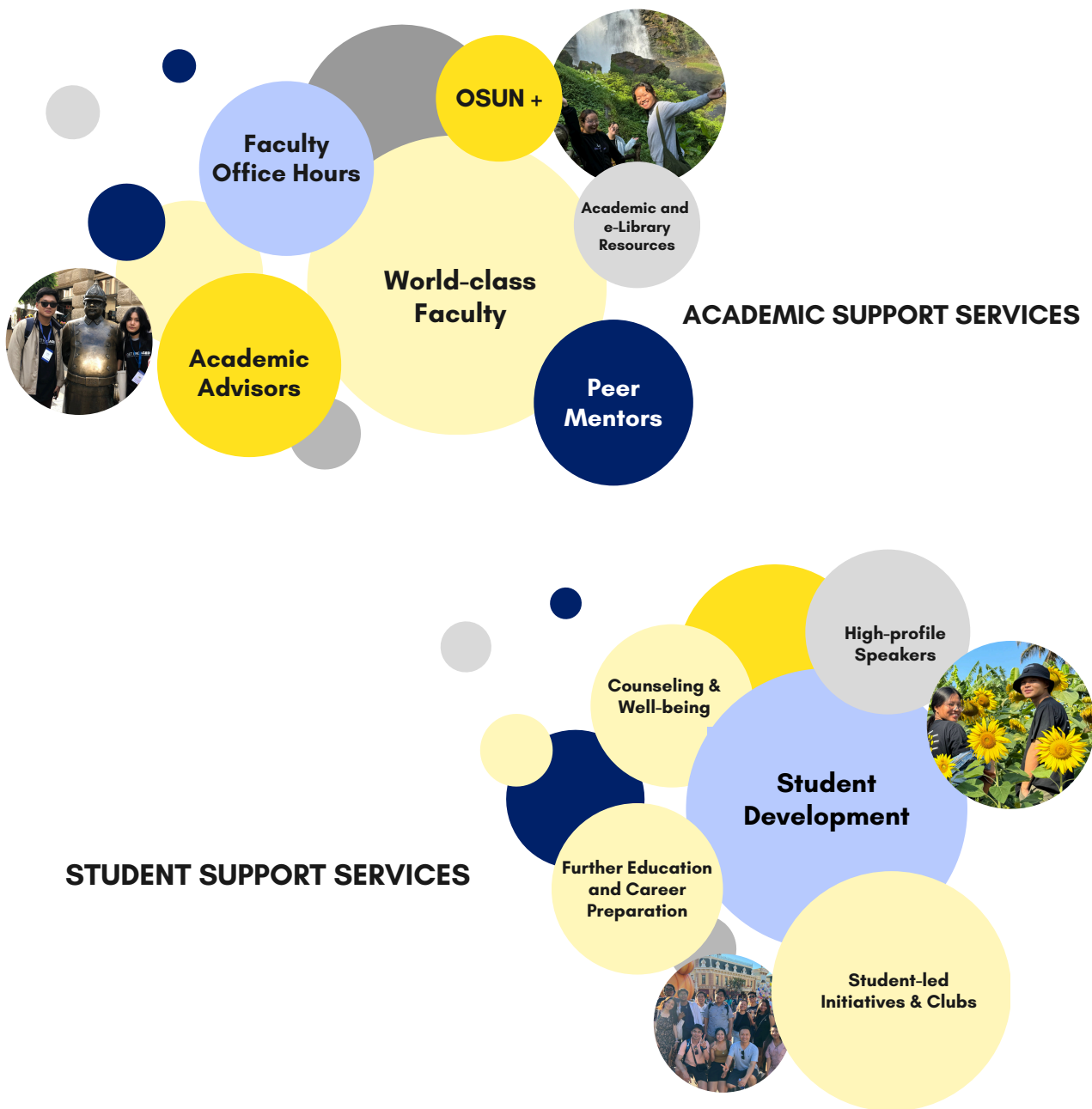
Can be applied as a part of the application preferably in Round 1 admissions process.



Students will need to relocate to their assigned hub.

HOW WILL PARAMI SUPPORT?

Academic and student development support at Parami University is designed to ensure a holistic learning experience. Students benefit from access to world-class faculty, dedicated academic advisors, and resources like the OSUN+ network and e-Library. Faculty office hours provide personalized academic guidance, while peer mentors and student development programs encourage collaborative learning and personal growth. Extracurricular support includes counseling and well-being services to promote mental health, as well as opportunities to engage with high-profile speakers and prepare for further education and career pathways. Together, these resources create a robust foundation for academic success and personal development.



9. ADMISSIONS & FINANCIAL AID

OVERVIEW: APPLYING TO PARAMI

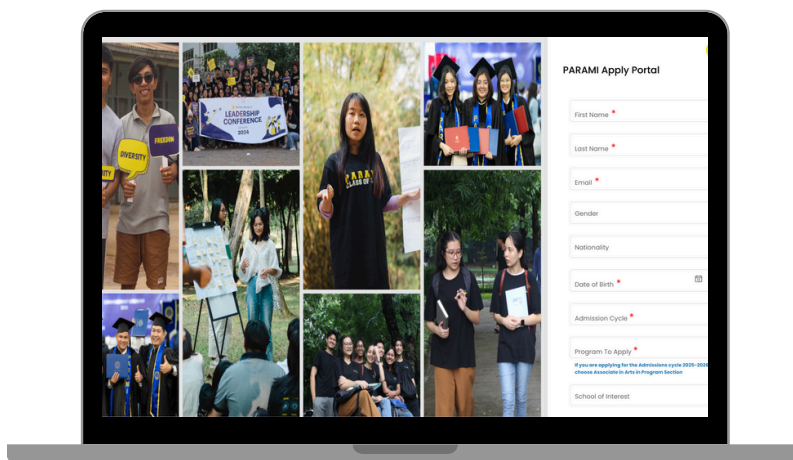
Parami University offers a rigorous degree program in English language encompassing both general education requirements and major specific requirements. Application requirements are prescribed for prospective applicants in this catalog as well as on the website.

Parami University currently has only one intake for the fall semester of the academic year. Please refer to the *TYPICAL ADMISSIONS AND FINANCIAL AID SCHEDULE* subsection of this section for a comprehensive schedule and timeline of admissions and financial aid.

APPLICATION PREPARATIONS

1. Application form
2. Personal statement (300–up to 500 words)
3. Supplemental essay (300–up to 500 words)
4. High school transcript or its equivalent*
5. English language proficiency test scores*
6. Contact information of 2 recommenders
7. Standardized test score or its equivalent (optional)
8. Video of study desk & family introduction

FILL OUT THE LEAD FORM & START YOUR APPLICATION



Go to Site: parami.creatrixcampus.com/public/lead/add

ENGLISH PROFICIENCY SCORES

Parami will offer free online entrance and English proficiency tests for applicants without high school transcripts or English proficiency scores. Applicants lacking transcripts or equivalents (GED, TASC, HiSET, or Cambridge International AS & A certificates) must take the Parami-proctored entrance test. Applicants without TOEFL, IELTS, or Duolingo scores must take the Parami-proctored English test.

English Proficiency Test	Min. Score
Test of English as a Foreign Language (TOEFL) Paper-based Test (PBT)	577
TOEFL Internet-based Test (iBT)	90
International English Language Testing System (IELTS) Academic Test	6.5
Duolingo English Proficiency Test	120
Pearson Test of English (PTE) Academic Test	62
Exam within the Common European Framework of Reference (CEFR)	Higher end of B2

ZERO TOLERANCE FOR PLAGIARISM

DO NOT

- Copy other people's essays
- Use ChatGPT/AI
- Ask someone to write for you
- Use the same essay for all universities

JOIN FOR MORE SUPPORT!

Parami University Admissions Preparation

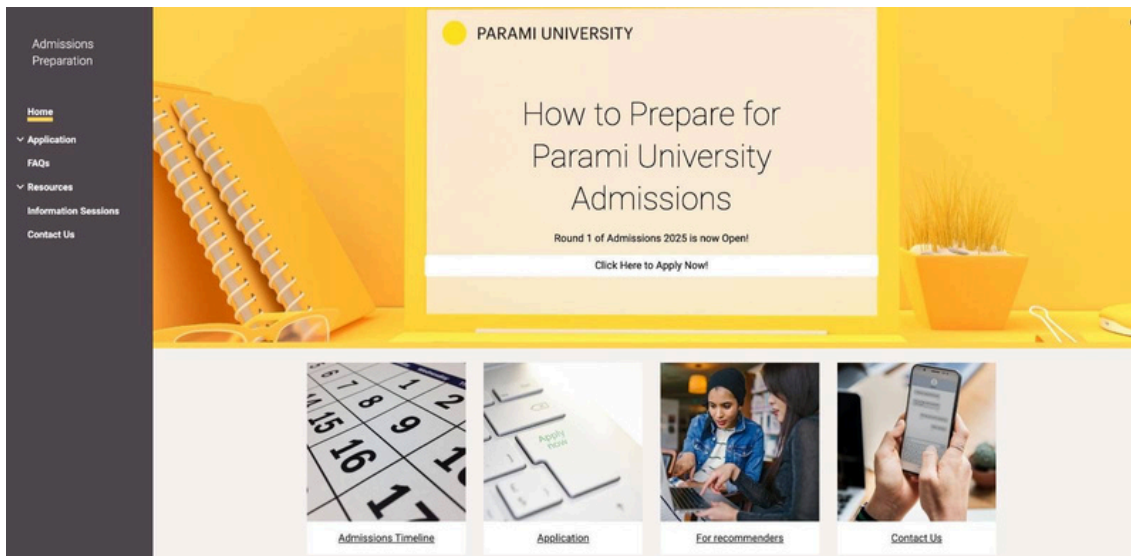
Private group · 3.6K members



+ Invite Share

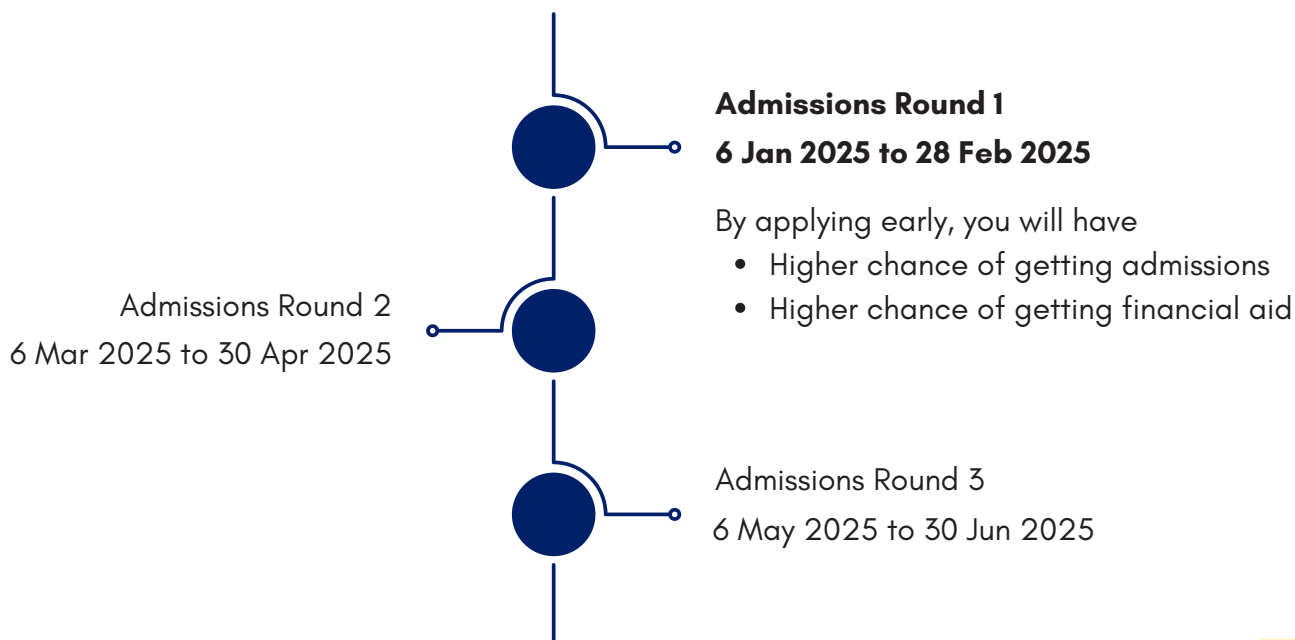


ADMISSIONS SUPPORT



Go to Site: parami.edu.mm/paramiadmissions

ADMISSIONS TIMELINE



TUITION FEES

The annual tuition fees for undergraduate programs is \$6,980 per year. With a vision to create change agents from all walks of life, all students received partial or full scholarships in previous years. We aim to continue offering partial and full scholarships this year based on students’ merit and financial needs.

For more information: go to parami.edu.mm/tuition-fees-financial-aid

FINANCIAL AID

Requirement

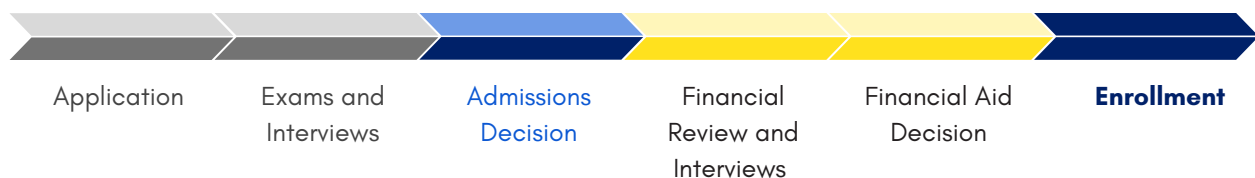
Maintain satisfactory academic progress (SAP) and complete the AA/BA degrees in 2/4 years, respectively. Need-based financial aid application via Apply portal. Financial aid will not be considered until after student has received an offer of admission from Parami University.

Types of Scholarships	Types of Funding
Parami Scholarship	Full
	Partial
Named Scholarship	Full

HOW DO WE ACCEPT STUDENTS?

Our admissions process is designed to be comprehensive and student-focused, incorporating a holistic review of each applicant. Key steps include the submission of an application, followed by exams and interviews to assess potential. Admissions decisions are made with a commitment to need-blind admissions and merit-based considerations, ensuring equal opportunity for all applicants. A financial review and interviews help evaluate the applicant’s financial situation, leading to make financial aid decisions. Upon acceptance, students complete the enrollment process, joining a community dedicated to their success and development.

- Holistic review process
- Need-blind admissions/Merit-based





Contact Us



+959793030555



www.parami.edu.mm



info@parami.edu.mm

